

Battery Switches

Manual Battery Switches

- Tin-plated copper studs for maximum conductivity and corrosion resistance
- Accepts up to 4/0 AWG cables
- Blue Sea Systems one-piece terminal stud design never loosens over time
- Studs accept 3/8" ring terminals
- 7/8" (22mm) stud length accepts multiple cable terminals
- Switches fit most Perko and Guest low amperage battery switch hole patterns
- Tactile indicator conveys knob position by feel
- Waterproof – rated IP66 from water projected in powerful jets
- Alternator Field Disconnect (AFD) available in some models



Part Number 5511E



Part Number 6006

E Series

- 350 amps continuous rating for inboard gasoline or diesel engines
- Surface, rear, or front panel mounting options

M Series (Mini)

- 300 amps continuous for outboards and small gasoline or diesel engines
- Isolating cover with snap-in side pieces protects rear contacts and allows wire access in any direction

Panel Switches

Contura Switches

- Vibration, shock, thermoshock, moisture and salt spray resistant
- Mounts in Blue Sea Systems Contura Water Resistant Panels and Contura Switch Mounting Panels



Part Number 7929

Part Number 8287

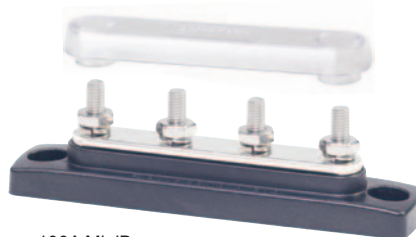


Bus Bars and Connectors



150A BusBar
10 Gang
Part Number 2301

Cover for 2301
Part Number 2715



100A MiniBus
4 Gang #10-32 Studs
Part Number 2305

Cover for 2305
Part Number 2713

BusBar and MiniBus Bus Bar

- The industry standard bus bar for positive distribution, and for the collection of negative or AC ground circuits
- Insert-molded stainless steel stud eliminates need for securing nut and allows high torquing for excellent electrical contact.
- MiniBus bus bars are ideal for limited space applications



DualBus Plus

- Combines negative and positive buses on one block
- Clear cover snaps on to meet Coast Guard and ABYC insulation requirements

150A 5 Gang 1/4"-20 Studs
Part Number 2722

PowerPost and Mini PowerPost Connectors

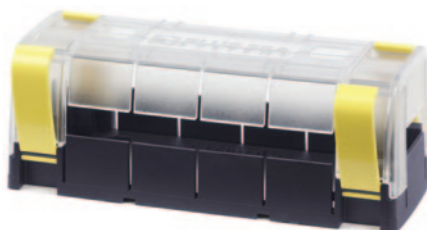
- Connects high amp cables securely
- Glass reinforced nylon base
- Stainless steel stud terminates multiple large conductors
- Insulator cap helps guard against accidental grounding



PowerPost
7/8" 5/16-18 Stud
Part Number 2002

MaxiBus Enclosure

- Secure insulating cover with breakouts for superior electrical insulation
- Meets ABYC insulation requirements
- Accepts bus bars 2127, 2128, and other products



Part Number 2719

Terminal Block

- Each screw pair is one isolated circuit
- Jumpers allow creation of common circuits (sold separately)
- Closed back design completely insulates power from the mounting surface



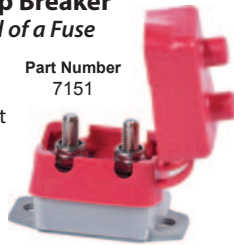
20A 6 Circuit
Terminal Block
Part Number 2408

Don't see the part you need? Call us or visit our online store!

Circuit Breakers

Marine Grade Short Stop Breaker Use a Circuit Breaker Instead of a Fuse

- Corrosion resistant materials
- Red P64 water resistant insulating boot protects against dust and splashing water
- Push-to-reset operation only disconnects when tripped
- Stainless steel lock nuts



Part Number
7151

Push Button Reset Only Quick Connect Circuit Breaker

- Branch circuit breakers (can also be used for 24-hour circuit protection)
- Push-to-reset operation, compact size
- Ignition protected—safe for installation on gas powered boats
- Trip-free—can't be held closed after trip



7A Part Number
7053

187 Series Thermal Circuit Breakers

- Combines switching and circuit protection into a single weatherproof, marine rated device for 25 to 200 amp loads
- Ignition protected—safe for gasoline powered boats
- Trip-free—can't be held closed after trip
- Robust 5/16 M8 terminals
- Meets SAE J1171 external ignition protection requirements



120A Panel Mount
Part Number
7046

A Series Toggle Breaker

- Meets ABYC standards
- Combines switching and circuit protection into a single device
- Trip-free—can't be held closed after trip



5A Part Number
7202



90A Surface Mount
Part Number
7143



DC Fuse Blocks and Fuses

Screw Terminal Compact Blade Style Fuse Block with Cover

- Surface mount circuit protection for ATC/ATO Fuses in a compact footprint
- Ignition protected — Insulating cover satisfies ABYC/USCG requirements
- Single side design allows wire entry from one side to minimize footprint
- Insulating cover meets ABYC/USCG insulation requirements
- Tin-plated copper buses and fuse clips
- Accepts ring or spade type terminals
- Includes 8 write-on circuit labels
- Fuses sold separately



8 common course circuits
Part Number 5046

Screw Terminal Blade Style Fuse Block with Cover

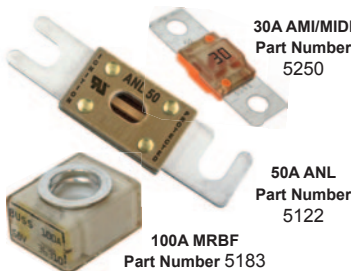
- Corrosion resistant, tin plated copper fuse clips reduce heat and improve system efficiency
- 30 amps per circuit; Can be used for 24-hour circuits
- Cover satisfies ABYC/USCG insulation requirements
- Cover features easy to open push button latch, label recesses, and storage space for two spare fuses
- Includes write-on circuit labels
- Accepts ATC and ATO fast acting blade fuses, and ring or spade type wire terminals
- Fuses sold separately



12 circuits with negative bus
Part Number 5026

AMI / MIDI, ANL, MRBF Fuses

- Paired with the appropriate fuse holder or block, Blue Sea fuses are ideal for marine and automotive AC and DC electrical systems



30A AMI/MIDI
Part Number
5250

50A ANL
Part Number
5122

100A MRBF
Part Number 5183

ANL Fuse Block with Insulating Cover

- 5003 - 35 to 750A, up to 32 Volts DC, wire gauges to 4/0
- 5005 - 35 to 300A, up to 32 Volts DC, wire gauges to 2/0
- Accepts 5/16" (M8) ring terminals
- Swing out design allows replacement of the fuse without removing fasteners
- Insert molded stainless steel studs resist corrosion and high torquing for excellent electrical contact
- UL 94-V0 reinforced polycarbonate base resists high heat
- Insulating cover satisfies ABYC/USCG requirements
- Cover breakouts for wire access in any direction
- Fuses sold separately



Part Number
5003



Part Number
5005

See our FULL LINE of Blue Sea components at store.polarwire.com